

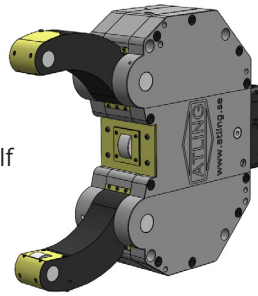


TECHNICAL BROCHURE

ATLING
STEADY
RESTS

GRIPPING RANGE

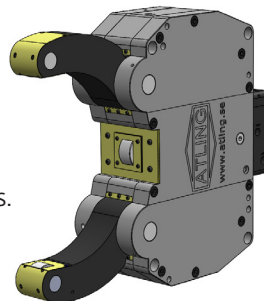
» **Atling AX-series:**
Our standard range of self centering steady rests.



GRIPPING RANGE AX-SERIES (MM)

| Model | AX1 | AX2 | AX3 | AX4 | AX5 | AX6 | AX7 | AX8 | AX8.5 | AX8.7 | AX9 | AX10 | AX11 |
|----------------|------|-------|--------|--------|--------|--------|--------|--------|---------|---------|---------|---------|---------|
| Gripping range | 6-70 | 8-105 | 12-125 | 12-160 | 20-200 | 30-255 | 45-320 | 85-360 | 100-430 | 140-470 | 100-510 | 250-680 | 450-870 |

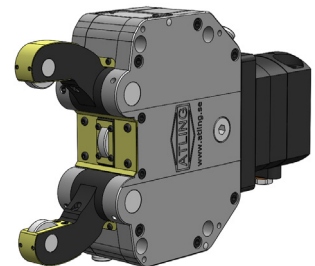
» **Atling AS-series:**
Designed to fit hole patterns of other brands.



GRIPPING RANGE AS-SERIES (MM)

| Model | AS6 | AS7 | AS8 |
|----------------|--------|--------|--------|
| Gripping range | 30-255 | 45-320 | 85-360 |

» **Atling AN-series:**
Our range of steady rests with narrow arms.



GRIPPING RANGE AN-SERIES (MM)

| Model | AN1 | AN2 | AN3 | AN4 |
|----------------|------|-------|--------|--------|
| Gripping range | 6-70 | 8-105 | 12-125 | 12-160 |

Order configuration code

AX/AS/AN: Model serie. (AS only 6, 7 and 8)

Model Size: 1 - 11 (according to list)

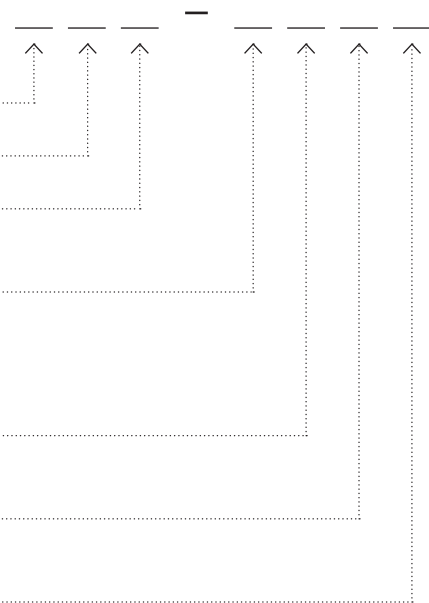
Cylinder type: E = External Cylinder
I = Internal Cylinder

Extra open arm: N = No extra open arm
U = Extra open arm, upper arm
L = Extra open arm, lower arm
B = Extra open arm, both arms

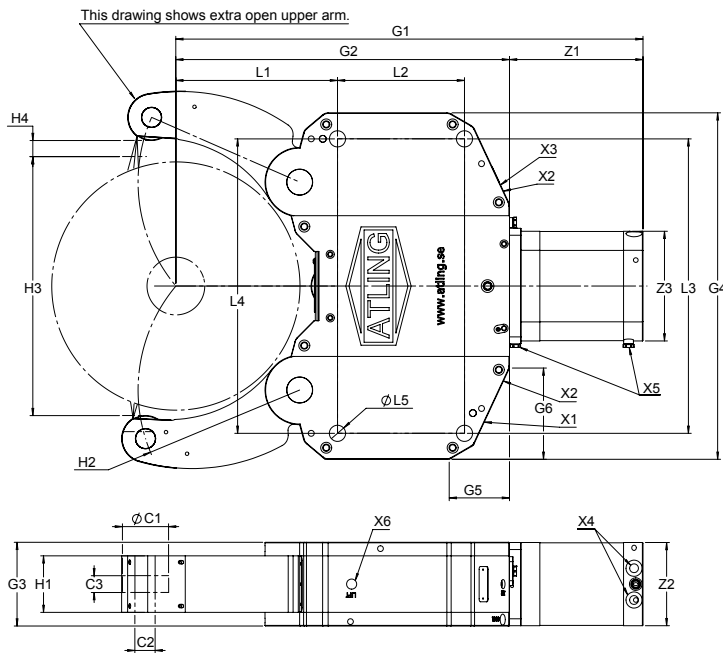
Lubrication Type: A = Automatic
M = Manual

Lubricant: O = Oil
G = Grease

Roller type: S = Standard
C = Cambered



DIMENSIONS AXE



X1 - Central lubrication connection
G1/8"

X2 - Air barrier connection
G1/8"

X3 - Water flush connection
G1/4" (AX1E - G1/8")

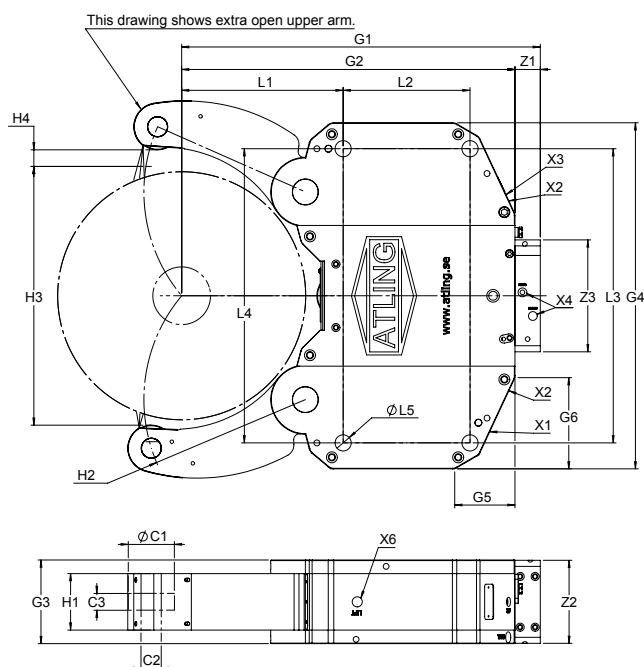
X4 - Hydraulic Open/Close
G3/8" (AX1E - G1/4")

X5 - Stroke control thread
M12x1 (AX1E - M8x1)

Min operating pressure - 10 bar

| Model size | | AX1E | AX2E | AX3E | AX4E | AX5E | AX6E | AX7E | AX8E | AX8.5E | AX8.7E | AX9E | AX10E | AX11E |
|---------------------------|---------|-------|-------|--------|--------|--------|--------|--------|--------|---------|---------|---------|---------|---------|
| Gripping range | | 6-70 | 8-105 | 12-125 | 12-160 | 20-200 | 30-255 | 45-320 | 85-360 | 100-430 | 140-470 | 100-510 | 250-680 | 450-870 |
| Roller | (mm) C1 | Ø24 | Ø35 | Ø35 | Ø47 | Ø52 | Ø52 | Ø62 | Ø72 | Ø80 | Ø80 | Ø80 | Ø100 | Ø160 |
| | (mm) C2 | Ø8 | Ø15 | Ø15 | Ø20 | Ø20 | Ø20 | Ø30 | Ø30 | Ø35 | Ø35 | Ø35 | Ø45 | Ø65 |
| | (mm) C3 | 15 | 19 | 19 | 25 | 25 | 25 | 29 | 29 | 29 | 29 | 29 | 32 | 75 |
| Lever | (mm) H1 | 30 | 37 | 37 | 53 | 53 | 53 | 68 | 68 | 98 | 98 | 98 | 98 | 118 |
| | (mm) H2 | R55 | R75 | R88 | R116 | R140 | R168 | R215 | R235 | R280 | R300 | R325 | R430 | R606 |
| | (mm) H3 | 75 | 110 | 128 | 168 | 208 | 267 | 331 | 377 | 448 | 491 | 521 | 686 | 930 |
| | (mm) H4 | 5 | 2 | 8 | 10 | 15 | 24 | 27 | 38 | 27 | 33 | 38 | 38 | 33 |
| Housing | (mm) G1 | 220 | 301 | 344 | 428 | 465 | 563 | 669 | 697 | 809 | 840 | 938 | 1103 | 1578 |
| | (mm) G2 | 137 | 200 | 231 | 290 | 314 | 380 | 465 | 493 | 578 | 603 | 661 | 803 | 1200 |
| | (mm) G3 | 60 | 70 | 70 | 90 | 90 | 110 | 145 | 145 | 145 | 145 | 145 | 165 | 198 |
| | (mm) G4 | 163 | 215 | 270 | 315 | 315 | 438 | 500 | 500 | 600 | 600 | 700 | 760 | 1200 |
| | (mm) G5 | 17 | 43 | 56 | 45 | 38 | 83 | 102 | 97 | 104 | 104 | 156 | 108 | 135 |
| | (mm) G6 | 27 | 37 | 68 | 45 | 66 | 133 | 105 | 100 | 158 | 158 | 220 | 188 | 254 |
| Hole pattern | (mm) L1 | 51 | 70 | 77 | 115 | 123 | 146 | 178 | 208,5 | 280 | 305,5 | 292,5 | 415 | 640 |
| | (mm) L2 | 64 | 85 | 102 | 135 | 135 | 155 | 210 | 210 | 220 | 220 | 260 | 312 | 400 |
| | (mm) L3 | 118 | 170 | 220 | 262 | 262 | 365 | 400 | 400 | 510 | 510 | 620 | 470 | 670 |
| | (mm) L4 | 118 | 170 | 210 | 262 | 262 | 365 | 400 | 400 | 510 | 510 | 620 | 700 | 1100 |
| | (mm) L5 | Ø11 | Ø14 | Ø14 | Ø18 | Ø18 | Ø23 | Ø23 | Ø23 | Ø28 | Ø28 | Ø28 | Ø35 | Ø35 |
| Cylinder | (mm) Z1 | 83 | 101 | 113 | 138 | 151 | 183 | 204 | 204 | 231 | 237 | 277 | 300 | 378 |
| | (mm) Z2 | 60 | 70 | 70 | 89 | 89 | 109 | 144 | 144 | 144 | 144 | 144 | 144 | 197 |
| | (mm) Z3 | 86 | 106 | 106 | 128 | 128 | 140 | 155 | 155 | 190 | 190 | 190 | 190 | 250 |
| Lifting threads | (mm) X6 | - | - | - | M16 | M16 | M16 | M16 | M20 | M20 | M20 | M20 | M24 | M30 |
| Max gripping force/roller | (daN) | 100 | 390 | 390 | 1170 | 1170 | 1480 | 1830 | 1830 | 2260 | 2260 | 2260 | 2260 | 3070 |
| Max roller speed | (m/min) | 730 | 930 | 930 | 805 | 890 | 890 | 655 | 765 | 685 | 685 | 685 | 685 | 457 |
| Centering accuracy | (mm) | 0,02 | 0,02 | 0,04 | 0,04 | 0,06 | 0,06 | 0,06 | 0,06 | 0,06 | 0,06 | 0,10 | 0,10 | 0,20 |
| Repeatability | (mm) | 0,005 | 0,005 | 0,005 | 0,005 | 0,005 | 0,005 | 0,005 | 0,005 | 0,01 | 0,01 | 0,02 | 0,02 | 0,02 |
| Max operating pressure | (bar) | 25 | 60 | 60 | 70 | 70 | 70 | 70 | 70 | 60 | 60 | 60 | 60 | 60 |
| Weight | (kg) | 8 | 17 | 23 | 45 | 48 | 83 | 158 | 156 | 234 | 237 | 280 | 450 | 1415 |

DIMENSIONS AXI



X1 - Central lubrication connection
G1/8"

X2 - Air barrier connection
G1/8"

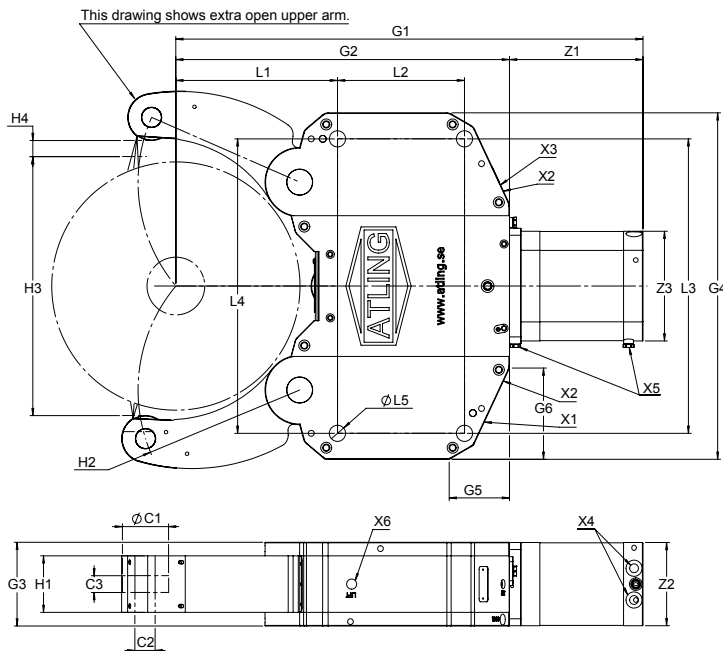
X3 - Water flush connection
G1/4"

X4 - Hydraulic Open/Close
G3/8"

Min operating pressure - 20 bar

| Model size | | AX4I | AX5I | AX6I | AX7I | AX8I | AX8.5I | AX8.7I | AX9I | AX10I | AX11I |
|---------------------------|---------|--------|--------|--------|--------|--------|---------|---------|---------|---------|---------|
| Gripping range | | 12-160 | 20-200 | 30-255 | 45-320 | 85-360 | 100-430 | 140-470 | 100-510 | 250-680 | 450-870 |
| Roller | (mm) C1 | Ø47 | Ø52 | Ø52 | Ø62 | Ø72 | Ø80 | Ø80 | Ø80 | Ø100 | Ø160 |
| | (mm) C2 | Ø20 | Ø20 | Ø20 | Ø30 | Ø30 | Ø35 | Ø35 | Ø35 | Ø45 | Ø65 |
| | (mm) C3 | 25 | 25 | 25 | 29 | 29 | 29 | 29 | 29 | 32 | 75 |
| Lever | (mm) H1 | 53 | 53 | 53 | 68 | 68 | 98 | 98 | 98 | 98 | 118 |
| | (mm) H2 | R116 | R140 | R168 | R215 | R235 | R280 | R300 | R325 | R430 | R606 |
| | (mm) H3 | 168 | 208 | 267 | 331 | 377 | 448 | 491 | 521 | 686 | 930 |
| | (mm) H4 | 10 | 15 | 24 | 27 | 38 | 27 | 33 | 38 | 38 | 33 |
| Housing | (mm) G1 | 334 | 368 | 434 | 509 | 537 | 622 | 647 | 705 | 847 | 1244 |
| | (mm) G2 | 290 | 314 | 380 | 465 | 493 | 578 | 603 | 661 | 803 | 1200 |
| | (mm) G3 | 90 | 90 | 110 | 145 | 145 | 145 | 145 | 145 | 165 | 198 |
| | (mm) G4 | 315 | 315 | 438 | 500 | 500 | 600 | 600 | 700 | 760 | 1200 |
| | (mm) G5 | 45 | 38 | 83 | 102 | 97 | 104 | 104 | 156 | 108 | 135 |
| | (mm) G6 | 45 | 66 | 133 | 105 | 100 | 158 | 158 | 220 | 188 | 254 |
| Hole pattern | (mm) L1 | 115 | 123 | 146 | 178 | 208,5 | 280 | 305,5 | 292,5 | 415 | 640 |
| | (mm) L2 | 135 | 135 | 155 | 210 | 210 | 220 | 220 | 260 | 312 | 400 |
| | (mm) L3 | 262 | 262 | 365 | 400 | 400 | 510 | 510 | 620 | 470 | 670 |
| | (mm) L4 | 262 | 262 | 365 | 400 | 400 | 510 | 510 | 620 | 700 | 1100 |
| | (mm) L5 | Ø18 | Ø18 | Ø23 | Ø23 | Ø23 | Ø28 | Ø28 | Ø28 | Ø35 | Ø35 |
| Cylinder | (mm) Z1 | 44 | 54 | 54 | 44 | 44 | 44 | 44 | 44 | 44 | 44 |
| | (mm) Z2 | 89 | 89 | 109 | 144 | 144 | 144 | 144 | 144 | 144 | 197 |
| | (mm) Z3 | 158 | 158 | 158 | 164 | 164 | 194 | 194 | 194 | 194 | 260 |
| Lifting threads | (mm) X6 | M16 | M16 | M16 | M16 | M20 | M20 | M20 | M20 | M24 | M30 |
| Max gripping force/roller | (daN) | 1170 | 1170 | 1480 | 1830 | 1830 | 2260 | 2260 | 2260 | 2260 | 3070 |
| Max roller speed | (m/min) | 805 | 890 | 890 | 655 | 765 | 685 | 685 | 685 | 685 | 457 |
| Centering accuracy | (mm) | 0,04 | 0,06 | 0,06 | 0,06 | 0,06 | 0,06 | 0,06 | 0,10 | 0,10 | 0,20 |
| Repeatability | (mm) | 0,005 | 0,005 | 0,005 | 0,005 | 0,005 | 0,01 | 0,10 | 0,02 | 0,02 | 0,02 |
| Max operating pressure | (bar) | 70 | 70 | 70 | 70 | 70 | 60 | 60 | 60 | 60 | 60 |
| Weight | (kg) | 40 | 42 | 78 | 145 | 147 | 220 | 223 | 270 | 440 | 1360 |

DIMENSIONS ASE



X1 - Central lubrication connection
G1/8"

X2 - Air barrier connection
G1/8"

X3 - Water flush connection
G1/4"

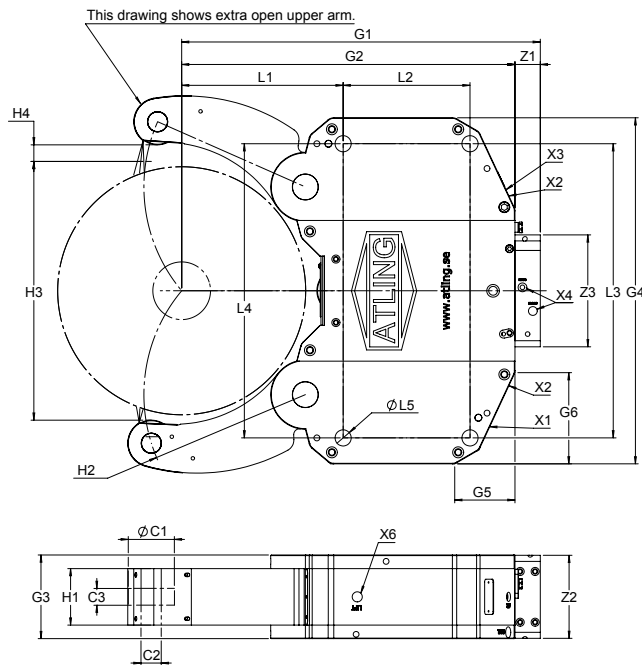
X4 - Hydraulic Open/Close
G3/8"

X5 - Stroke control thread
M12x1

Min operating pressure - 10 bar

| Model size | | AS6E | AS7E | AS8E |
|---------------------------|---------|--------|--------|--------|
| Gripping range | | 30-255 | 45-320 | 85-360 |
| Roller | (mm) C1 | Ø52 | Ø62 | Ø72 |
| | (mm) C2 | Ø20 | Ø30 | Ø30 |
| | (mm) C3 | 25 | 29 | 29 |
| Lever | (mm) H1 | 53 | 68 | 68 |
| | (mm) H2 | R168 | R215 | R235 |
| | (mm) H3 | 267 | 331 | 377 |
| | (mm) H4 | 24 | 27 | 38 |
| Housing | (mm) G1 | 563 | 669 | 697 |
| | (mm) G2 | 403 | 465 | 493 |
| | (mm) G3 | 110 | 145 | 145 |
| | (mm) G4 | 438 | 500 | 500 |
| | (mm) G5 | 113 | 105 | 100 |
| | (mm) G6 | 20 | 38 | 42 |
| Hole pattern | (mm) L1 | 146 | 178 | 198 |
| | (mm) L2 | 240 | 270 | 270 |
| | (mm) L3 | 365 | 400 | 400 |
| | (mm) L4 | 365 | 400 | 400 |
| | (mm) L5 | Ø23 | Ø23 | Ø23 |
| Cylinder | (mm) Z1 | 182 | 204 | 204 |
| | (mm) Z2 | 109 | 144 | 144 |
| | (mm) Z3 | 140 | 155 | 155 |
| Lifting threads | (mm) X6 | M16 | M16 | M20 |
| Max gripping force/roller | (daN) | 1480 | 1830 | 1830 |
| Max roller speed | (m/min) | 890 | 655 | 765 |
| Centering accuracy | (mm) | 0,06 | 0,06 | 0,06 |
| Repeatability | (mm) | 0,005 | 0,005 | 0,005 |
| Max operating pressure | (bar) | 70 | 70 | 70 |
| Weight | (kg) | 92 | 167 | 165 |

DIMENSIONS ASI



X1 - Central lubrication connection
G1/8"

X2 - Air barrier connection
G1/8"

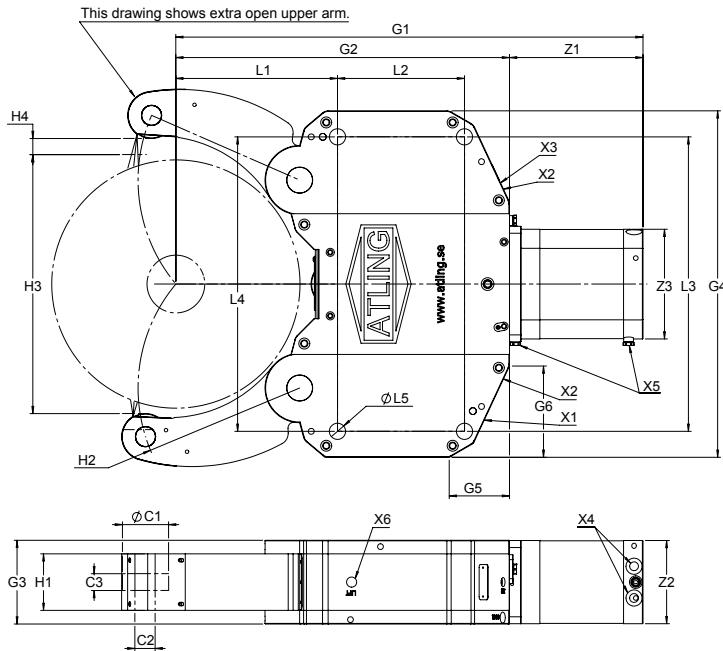
X3 - Water flush connection
G1/4"

X4 - Hydraulic Open/Close
G3/8"

Min operating pressure - 20 bar

| Model size | | AS6I | AS7I | AS8I |
|---------------------------|---------|--------|--------|--------|
| Gripping range | | 30-255 | 45-320 | 85-360 |
| Roller | (mm) C1 | Ø52 | Ø62 | Ø72 |
| | (mm) C2 | Ø20 | Ø30 | Ø30 |
| | (mm) C3 | 25 | 29 | 29 |
| Lever | (mm) H1 | 53 | 68 | 68 |
| | (mm) H2 | R168 | R215 | R235 |
| | (mm) H3 | 267 | 331 | 377 |
| | (mm) H4 | 24 | 27 | 38 |
| Housing | (mm) G1 | 434 | 509 | 537 |
| | (mm) G2 | 403 | 465 | 493 |
| | (mm) G3 | 110 | 145 | 145 |
| | (mm) G4 | 438 | 500 | 500 |
| | (mm) G5 | 113 | 105 | 100 |
| | (mm) G6 | 20 | 38 | 42 |
| Hole pattern | (mm) L1 | 146 | 178 | 198 |
| | (mm) L2 | 240 | 270 | 270 |
| | (mm) L3 | 365 | 400 | 400 |
| | (mm) L4 | 365 | 400 | 400 |
| | (mm) L5 | Ø23 | Ø23 | Ø23 |
| Cylinder | (mm) Z1 | 54 | 44 | 44 |
| | (mm) Z2 | 109 | 144 | 144 |
| | (mm) Z3 | 158 | 164 | 164 |
| Lifting threads | (mm) X6 | M16 | M16 | M20 |
| Max gripping force/roller | (daN) | 1480 | 1830 | 1830 |
| Max roller speed | (m/min) | 890 | 655 | 765 |
| Centering accuracy | (mm) | 0,06 | 0,06 | 0,06 |
| Repeatability | (mm) | 0,005 | 0,005 | 0,005 |
| Max operating pressure | (bar) | 70 | 70 | 70 |
| Weight | (kg) | 84 | 155 | 153 |

DIMENSIONS ANE



X1 - Central lubrication connection
G1/8"

X2 - Air barrier connection
G1/8"

X3 - Water flush connection
G1/4" (AN1E - G1/8")

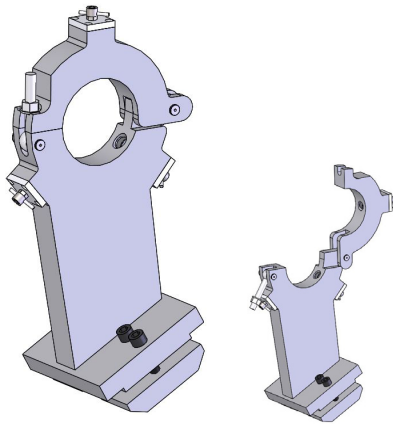
X4 - Hydraulic Open/Close
G3/8" (AN1E - G1/4")

X5 - Stroke control thread
M12x1 (AN1E - M8x1)

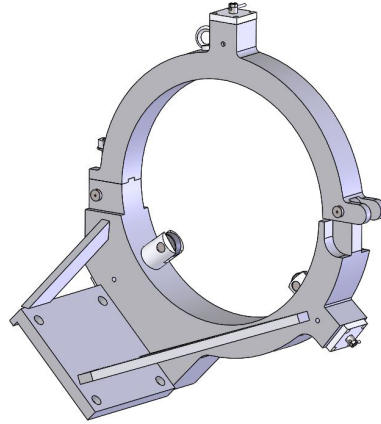
Min operating pressure - 10 bar

| Model size | | AN1E | AN2E | AN3E | AN4E |
|---------------------------|---------|-------|-------|--------|--------|
| Gripping range | | 6-70 | 8-105 | 12-125 | 12-160 |
| Roller | (mm) C1 | Ø24 | Ø35 | Ø35 | Ø47 |
| | (mm) C2 | Ø8 | Ø15 | Ø15 | Ø20 |
| | (mm) C3 | 10 | 10 | 10 | 10 |
| Lever | (mm) H1 | 19 | 19 | 19 | 19 |
| | (mm) H2 | R55 | R75 | R88 | R116 |
| | (mm) H3 | 75 | 110 | 128 | 168 |
| | (mm) H4 | 5 | 2 | 8 | 10 |
| Housing | (mm) G1 | 220 | 301 | 344 | 428 |
| | (mm) G2 | 137 | 200 | 231 | 290 |
| | (mm) G3 | 60 | 70 | 70 | 90 |
| | (mm) G4 | 163 | 215 | 270 | 315 |
| | (mm) G5 | 17 | 43 | 56 | 45 |
| | (mm) G6 | 27 | 37 | 68 | 45 |
| Hole pattern | (mm) L1 | 51 | 70 | 77 | 115 |
| | (mm) L2 | 64 | 85 | 102 | 135 |
| | (mm) L3 | 118 | 170 | 220 | 262 |
| | (mm) L4 | 118 | 170 | 210 | 262 |
| | (mm) L5 | Ø11 | Ø14 | Ø14 | Ø18 |
| Cylinder | (mm) Z1 | 83 | 101 | 113 | 138 |
| | (mm) Z2 | 60 | 70 | 70 | 89 |
| | (mm) Z3 | 86 | 106 | 106 | 128 |
| Lifting threads | (mm) X6 | - | - | - | M16 |
| Max gripping force/roller | (daN) | 60 | 190 | 190 | 500 |
| Max roller speed | (m/min) | 730 | 930 | 930 | 805 |
| Centering accuracy | (mm) | 0,02 | 0,02 | 0,04 | 0,04 |
| Repeatability | (mm) | 0,005 | 0,005 | 0,005 | 0,005 |
| Max operating pressure | (bar) | 15 | 30 | 30 | 30 |
| Weight | (kg) | 8 | 17 | 23 | 45 |

MANUAL STEADY RESTS

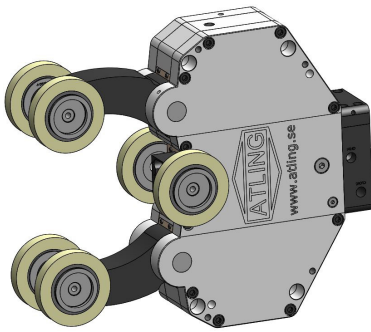


» Manual steady rests –
Mounted on machine bed

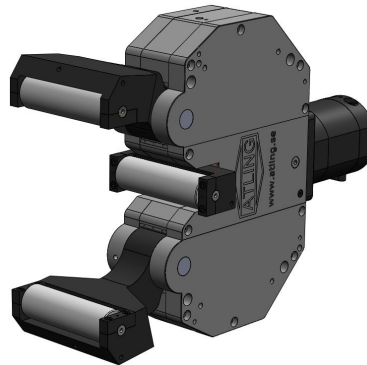


» Manual steady rests –
Mounted on steady rest base

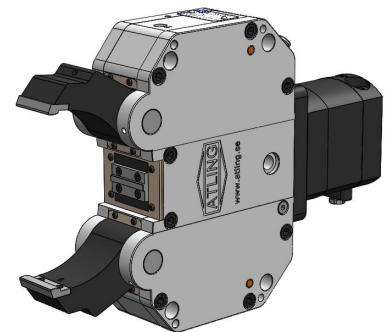
ROLLERS/PADS



» Rubber Rollers

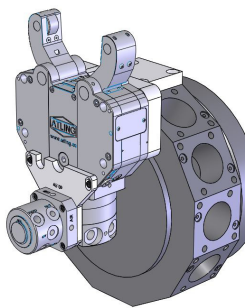


» Wide Rollers

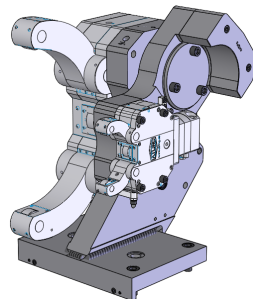


» Diamond Pads

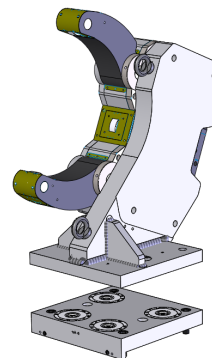
BRACKETS & ADAPTER PLATES



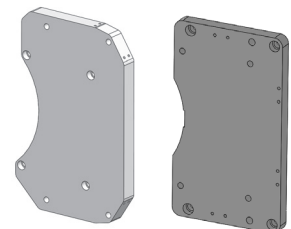
» Turret Bracket



» Flexi Bracket



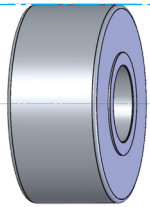
» Zero Point Clamping



» Adapter Plates

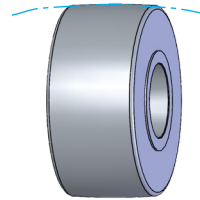
ATLING STEADY REST ROLLER

» Cylindrical Roller



Used to hold the work piece. This type of roller have nearly a plain surface, and therefore this is standard when the Steady Rest is fixed during the processing.

» Cambered Roller



The Cambered rollers have got a convex surface and are used in applications where the steady rest is moving along the work piece.

| Model | 1 | 2 | 3 | 4 | 5 | 6 | 7 | 8 | 8.5 | 8.7 | 9 | 10 | 11 |
|-------------|----------|----------|----------|----------|----------|----------|----------|----------|----------|----------|----------|----------|----------|
| Cylindrical | A5055044 | A5055040 | A5055040 | A5055014 | A5055026 | A5055026 | A5055005 | A5055008 | A5055017 | A5055017 | A5055017 | A5551310 | A5551311 |
| Cambered | A5055050 | A5551203 | A5551203 | A5551204 | A5551205 | A5551205 | A5551207 | A5551208 | A5551209 | A5551209 | A5551209 | A5551210 | A5551211 |

EXTRA OPEN ARM

Extra open arm is an option to increase the opening of the arms to give more space to apply the work piece. The extra open arm track plate can be installed in the steady rest or purchased as a spare part and replace a standard track plate, on any arm or both. The gripping range does not get affected by this option.



» Track Plate



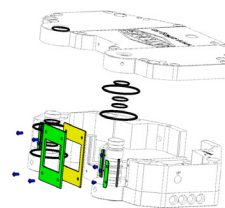
» Track Plate Extra open arm

| Model | AX1 | AX2 | AX3 | AX4 | AX5 | AX/AS6 | AX/AS7 | AX/AS8 | AX8.5 | AX8.7 | AX9 | AX10 | AX11 |
|----------------|--------|--------|--------|--------|--------|--------|--------|--------|--------|--------|--------|--------|--------|
| Standard | A43007 | A42932 | A42973 | A42981 | A42946 | A42875 | A42895 | A42989 | A43160 | A30941 | A42899 | A43227 | A43241 |
| Extra open arm | A43006 | A42933 | A42972 | A42982 | A42947 | A42874 | A42896 | A42988 | A43161 | A30942 | A42898 | A43228 | A43242 |

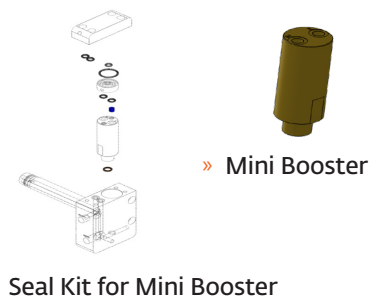
SEAL KIT CYLINDER



SEAL KIT HOUSE



MINI BOOSTER

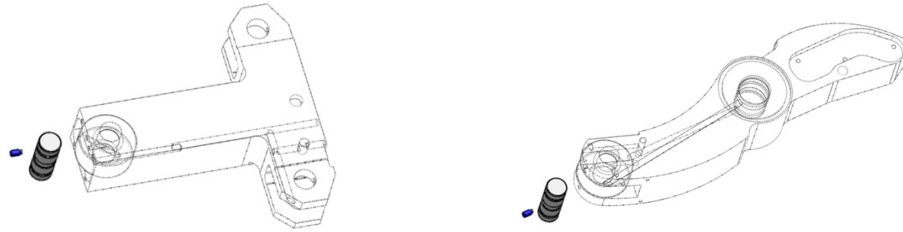


| Model | 1 | 2 | 3 | 4 | 5 | 6 | 7 | 8 | 8.5 | 8.7 | 9 | 10 | 11 |
|---------------------------|----------|----------|----------|----------|----------|----------|----------|----------|----------|----------|----------|----------|----------|
| Seal Kit Cylinder | | | | | | | | | | | | | |
| AXI/ASI | | | | A5550412 | A5550512 | A5550612 | A5550712 | A5550812 | A5550912 | A5550912 | A5550912 | A5551012 | A5551112 |
| AXE/ASE | A5550102 | A5550202 | A5550302 | A5550402 | A5550502 | A5550602 | A5550702 | A5550802 | A5550902 | A5550902 | A550902 | A5551002 | A5551102 |
| Seal Kit House | | | | | | | | | | | | | |
| AX/AS | A5550101 | A5550201 | A5550301 | A5550401 | A5550501 | A5550601 | A5550701 | A5550801 | A5550901 | A5550901 | A5550901 | A5551001 | A5551101 |
| Mini Booster | | | | A5235034 | A5235034 | A5235034 | A5235034 | A5235034 | A5235034 | A5235034 | A5235034 | A5235034 | A5235034 |
| Seal Kit for Mini Booster | | | | A5550506 | A5550506 | A5550606 | A5550606 | A5550606 | A5550606 | A5550606 | A5550606 | A5550606 | A5550606 |

SPARE PARTS

SHAFTS KIT

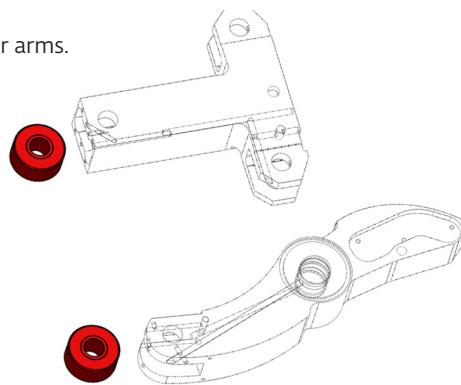
One shaft for middle piece and two shafts for arms.



| Model | 1 | 2 | 3 | 4 | 5 | 6 | 7 | 8 | 8.5 | 8.7 | 9 | 10 | 11 |
|-------|----------|----------|----------|----------|----------|----------|----------|----------|----------|----------|----------|----------|----------|
| AX/AS | A5550105 | A5550205 | A5550305 | A5550405 | A5550505 | A5550605 | A5550705 | A5550805 | A5550905 | A5550905 | A5550905 | A5551005 | A5551105 |

ROLLERS KIT

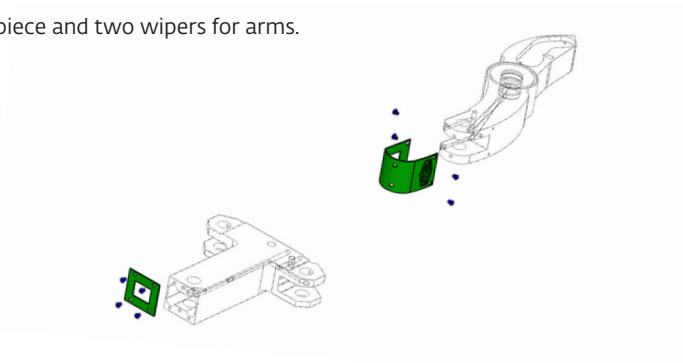
One roller for middle piece and two rollers for arms.



| Model | 1 | 2 | 3 | 4 | 5 | 6 | 7 | 8 | 8.5 | 8.7 | 9 | 10 | 11 |
|-------|----------|----------|----------|----------|----------|----------|----------|----------|----------|----------|----------|----------|----------|
| AX/AS | A5550104 | A5550204 | A5550304 | A5550404 | A5550504 | A5550604 | A5550704 | A5550804 | A5550904 | A5550904 | A5550904 | A5551004 | A5551104 |

WIPERS KIT

One wiper for middle piece and two wipers for arms.

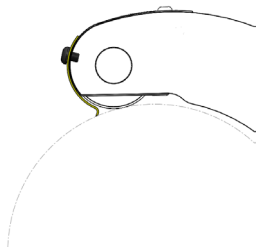


| Model | 1 | 2 | 3 | 4 | 5 | 6 | 7 | 8 | 8.5 | 8.7 | 9 | 10 | 11 |
|-------|----------|----------|----------|----------|----------|----------|----------|----------|----------|----------|----------|----------|----------|
| AX/AS | A5550103 | A5550203 | A5550303 | A5550403 | A5550503 | A5550603 | A5550703 | A5550803 | A5550903 | A5550903 | A5550903 | A5551003 | A5551103 |

WORKPIECE WIPER

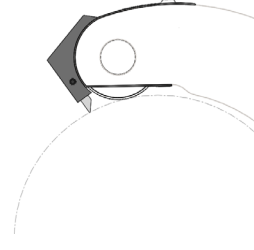
Wiper to remove dirt and chips from workpiece.

» Standard workpiece wiper.



The standard workpiece wiper is used to remove chips from the workpiece. It's manually adjusted and can be assembled in existing holes on standard arms.

» Resilient workpiece wiper.

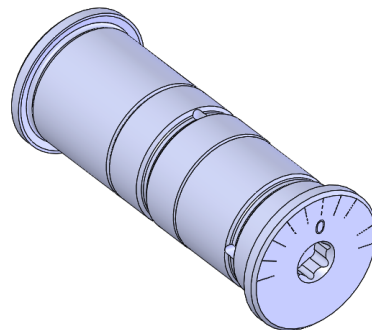


The resilient workpiece wiper is used to remove chips from the workpiece. Its spring function makes it automatically adjusted to the workpiece surface. It is assembled in existing holes on standard arms.

| Model | AX1 | AX2 | AX3 | AX4 | AX5 | AX6 | AX7 | AX8 | AX8.5 | AX8.7 | AX9 | AX10 | AX11 |
|-----------|--------|--------|--------|--------|--------|--------|--------|--------|--------|--------|--------|--------|--------|
| Standard | A51001 | A51002 | A51002 | A51004 | A51005 | A51005 | A51007 | A51008 | A51009 | A51009 | A51009 | A51010 | A51011 |
| Resilient | | A50002 | A50002 | A50004 | A50005 | A50005 | A50007 | A50008 | A50009 | A50009 | A50009 | A50010 | A50011 |

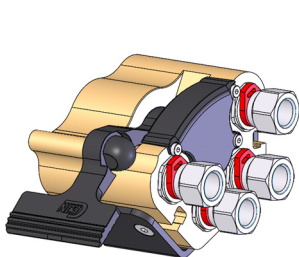
ECCENTRIC FINE ADJUSTMENT KIT

Eccentric roller pins on the arms provides a quick fine adjustment of the center line.

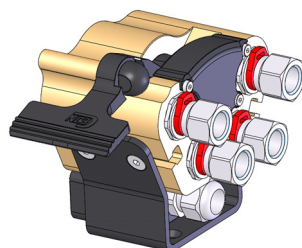


MULTI-X COUPLINGS

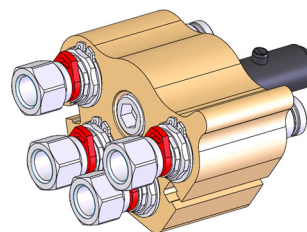
Multi X-Couplings, the quick way to connect hydraulics, coolant and automatic lubrication systems together. It's also possible to attach electrical connections for example sensors in the same coupling.



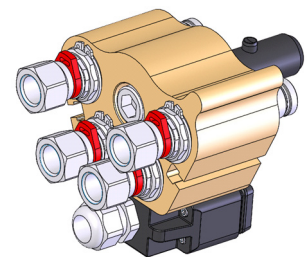
Art.No: A5065308



Art.No: A5065308 + A5065311



Art.No: A5065309



Art.No: A5065309 + A5065310



Atlings Maskinfabrik AB
P.O. Box 21
SE 816 25 Ockelbo, Sweden
+46 297 557 00
steadyrest@atling.se
www.atling.com