

FORKARDT[®]

FORKARDT.COM

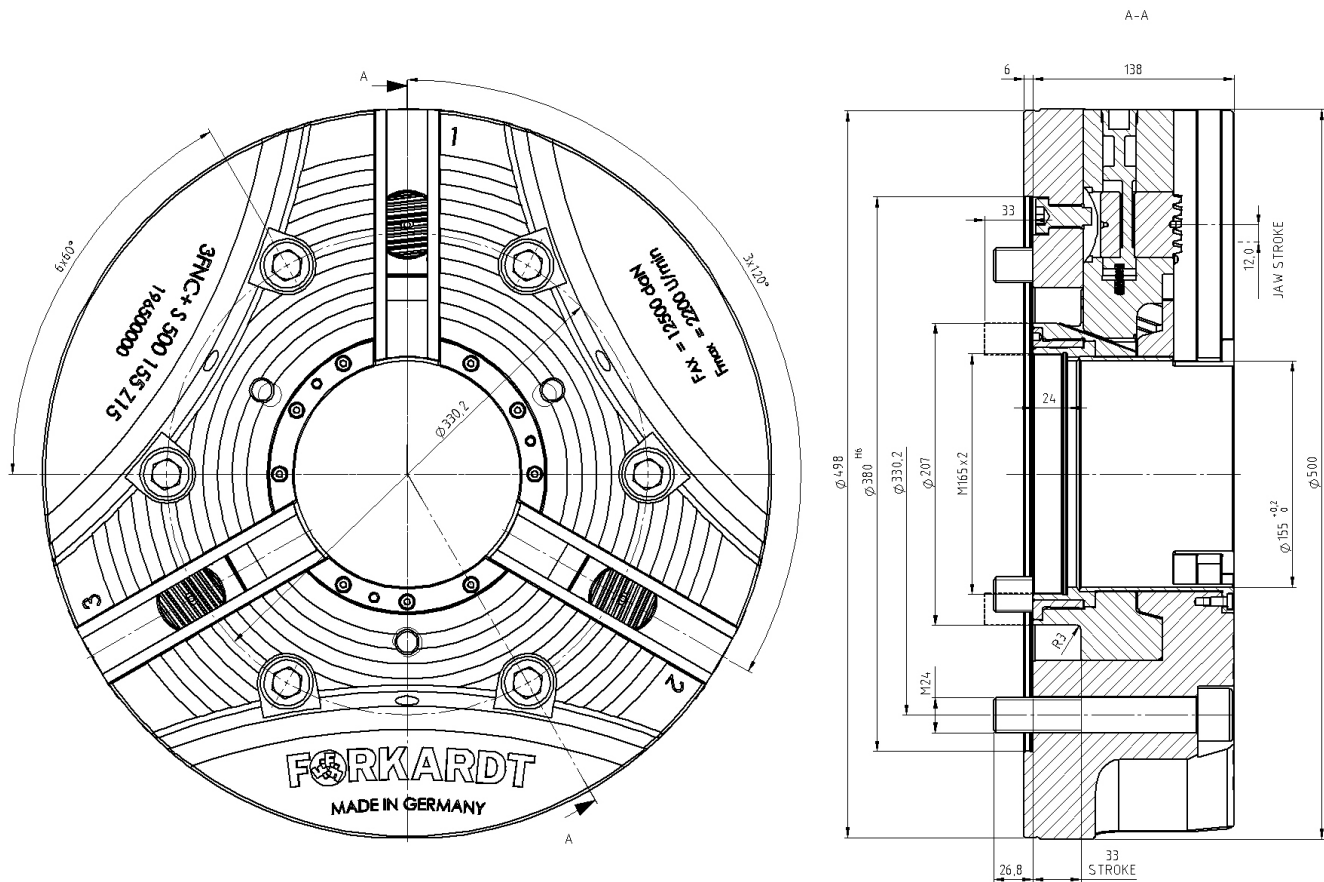


3FNC+S 500-155

POWER CHUCK WITH QUICK CHANGE JAW SYSTEM

FORKARDT® | 3FNC+S 500-155

POWER CHUCK WITH QUICK CHANGE JAW SYSTEM



PERFORMANCE DATA

Max. Speed	rpm.	2.200
Max. Clamping force	daN	25.000
Max. Actuating force	daN	12.500
Weight	Kg	135
Jaw stroke	mm	12, 0
Serration	Angled serration	

FORKARDT® | 3FNC+S 500-155

POWER CHUCK WITH QUICK CHANGE JAW SYSTEM

CYL . MOUNTING DIN 6350

SPINDLE SIZE DIN55026	WITHOUT BASE AND TOP TOOLING	INCL. ONE PIECE STEP JAW (FSTB)	INCL. BASE & HARD TOP JAW (FGB + FHB)
Z 380	DI96500000	DI96500979	DI96500978

MOUNTING SCREW	6 X M24
-----------------------	----------------

SHORT TAPER DIN 55026

To build on a spindle according to DIN 55026 you need an additional flange with the required cone size.



SPINDLE SIZE DIN55026	ITEM NUMBER
K11	DI96500K11
K15	DI96500K15

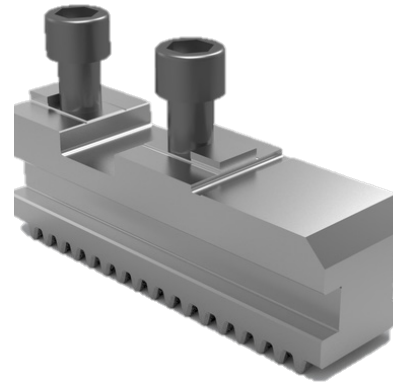
FORKARDT® | **3FNC+S 500-155**

POWER CHUCK WITH QUICK CHANGE JAW SYSTEM



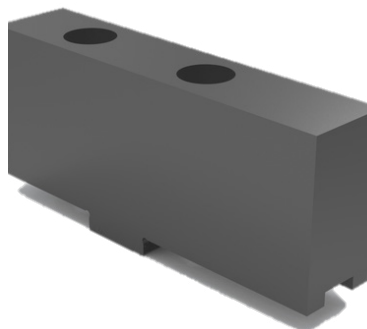
WRENCH FOR JAW CHANGE

D196315010



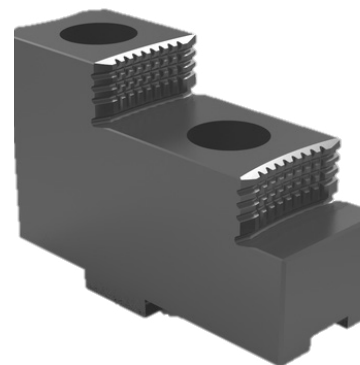
BASE JAW FGB400

D180606000



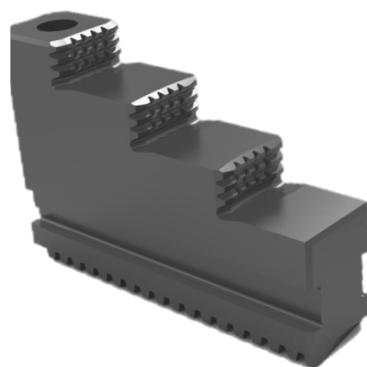
SOFT TOP JAW FWB400

D1070038425



HARD TOP JAW FHB400

D1070038524



ONE PIECE STEPED JAW FSTB400

D1070038533

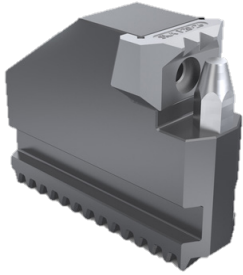


SOFT MONOBLOK JAW FMB400

D1070038034

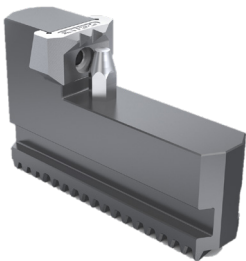
FORKARDT® | 3FNC+S 500-155

POWER CHUCK WITH QUICK CHANGE JAW SYSTEM



GRIPPER JAW OD-CLAMPING KBKTNC

Clamping Range	Item Number
Ø 90-303	D45488000
Ø 264-488	D45490000
Ø 373-528	D45491000



GRIPPER JAW ID-CLAMPING KBKTNC

Clamping Range	Item Number
Ø 174-309	D45492000
Ø 294-519	D45493000
Ø 354-555	D45494000



GREASE (CARTRIDGE 400 GR) PF26

D410140026

GREASE (CAN 1 KG) PF26

D410140126



HYDRAULIC GREASE GUN

D410140012I

GRIPPING FORCE METER (Ø 114-744) SKMI500

D300229000

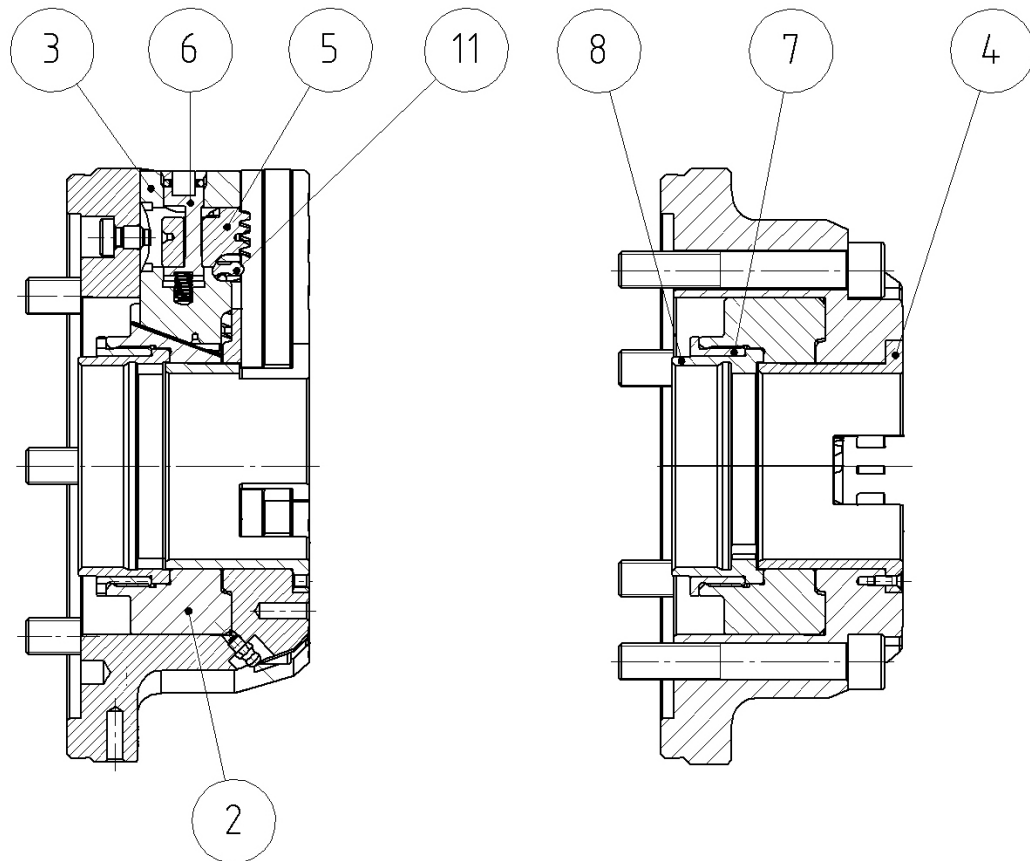
THRUST BOLTS FOR INCREASING THE GRIPPING RANGE

D300229003



FORKARDT® | 3FNC+S 500-155

POWER CHUCK WITH QUICK CHANGE JAW SYSTEM



NUMBER	LABEL	ITEM NUMBER
2	PISTON	DI96500002
3	TRANSMISSION JAW	DI96500003
4	PROTECTIVE SLEEVE	DI96500004
5	ENGAGING PLUNGER	DI96500005
6	ECCENTRIC LOCKING PIN	DI96500006
7	DRAW TUBE CONNECTOR COVER	DI96500007
8	DRAW TUBE CONNECTOR	DI96500008
11	NOTCH	DI96500011
3, 5, 6, 11 *	TRANSMISSION JAW COMPLETE	DI964500400

* incl. Spring set