

# **FORKARDT**<sup>®</sup>

FORKARDT.COM

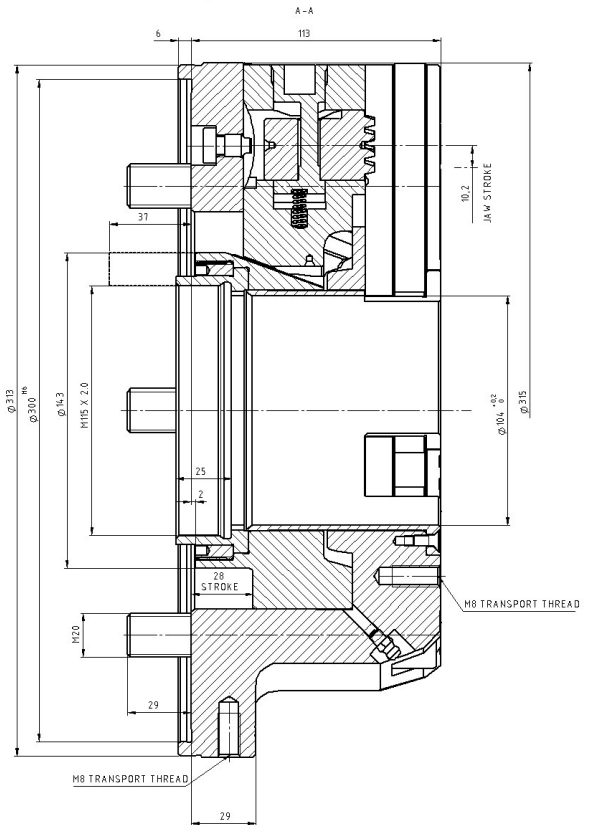
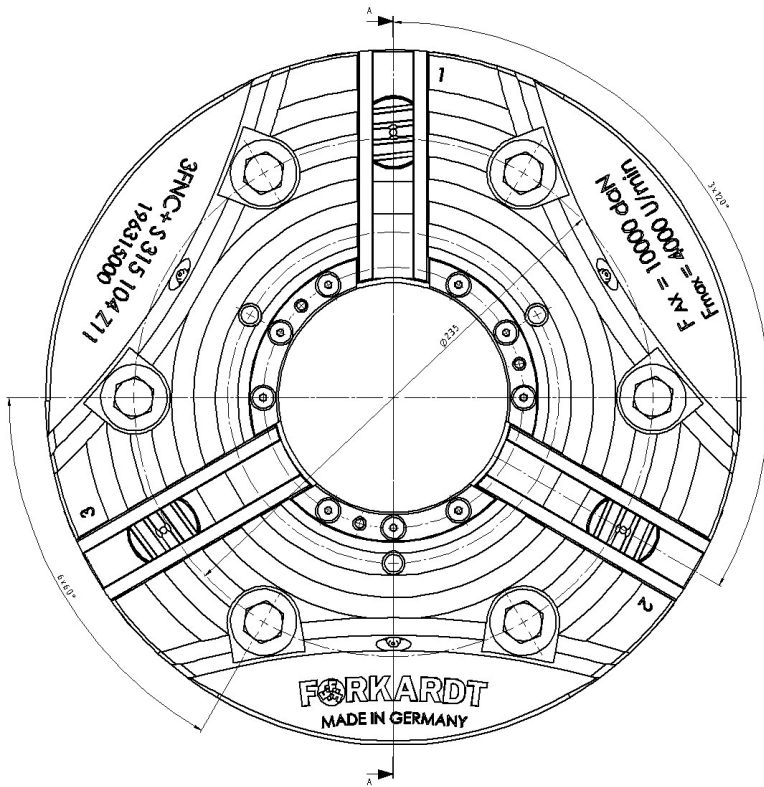


# **3FNC+S 315-104**

**POWER CHUCK WITH QUICK CHANGE JAW SYSTEM**

# FORKARDT® | 3FNC+S 315-104

## POWER CHUCK WITH QUICK CHANGE JAW SYSTEM



### PERFORMANCE DATA

Max. Speed	rpm.	4.000
Max. Clamping force	daN	18.500
Max. Actuating force	daN	10.000
Weight	Kg	44,4
Jaw stroke	mm	10,2
Serration	Angled serration	

# FORKARDT® | 3FNC+S 315-104

## POWER CHUCK WITH QUICK CHANGE JAW SYSTEM

### CYL . MOUNTING DIN 6350

SPINDLE SIZE DIN55026	WITHOUT BASE AND TOP TOOLING	INCL. ONE PIECE STEP JAW (FSTB)	INCL. BASE & HARD TOP JAW (FGB + FHB)
Z 300	DI963I5000	DI963I5979	DI963I5978

<b>MOUNTING SCREW</b>	<b>6 X M20</b>
-----------------------	----------------

### SHORT TAPER DIN 55026

To build on a spindle according to DIN 55026 you need an additional flange with the required cone size.



SPINDLE SIZE DIN55026	ITEM NUMBER
K8	DI963I6K08
K11	DI963I5K11

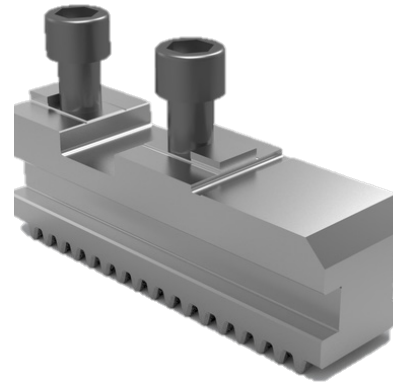
# **FORKARDT**® | **3FNC+S 315-104**

## **POWER CHUCK WITH QUICK CHANGE JAW SYSTEM**



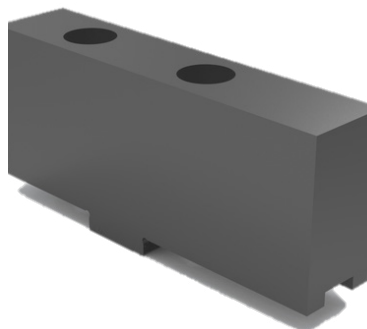
**WRENCH FOR JAW CHANGE**

D196315010



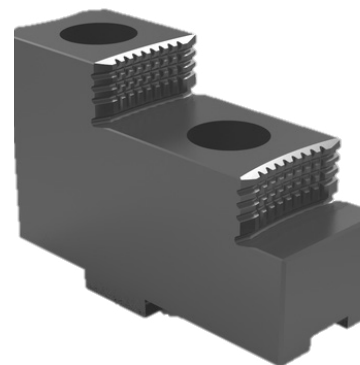
**BASE JAW** FGB315

D180596000



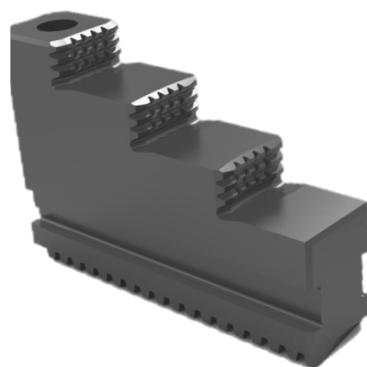
**SOFT TOP JAW** FWB315

D1070033425



**HARD TOP JAW** FHB315

D1070033524



**ONE PIECE STEPED JAW** FSTB315

D1070033533

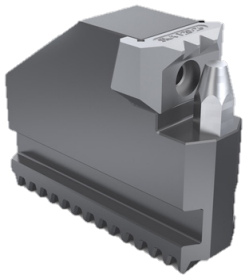


**SOFT MONOBLOK JAW** FMB315

D1070033034

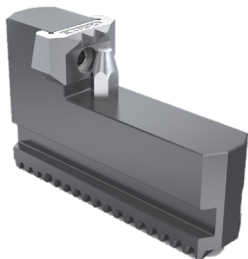
# FORKARDT® | 3FNC+S 315-104

## POWER CHUCK WITH QUICK CHANGE JAW SYSTEM



### GRIPPER JAW OD-CLAMPING KBKTNC

Clamping Range	Item Number
Ø 50-130	D161835000
Ø 120-169	D45483000
Ø 177-292	D45484000
Ø 257-328	D45485000



### GRIPPER JAW ID-CLAMPING KBKTNC

Clamping Range	Item Number
Ø 126-248	D45486000
Ø 250-364	D45487000



### GREASE (CARTRIDGE 400 GR) PF26

D410140026

### GREASE (CAN 1 KG) PF26

D410140126



### HYDRAULIC GREASE GUN

D4101400121

### GRIPPING FORCE METER (Ø 63-293) SKM1200

D300224000

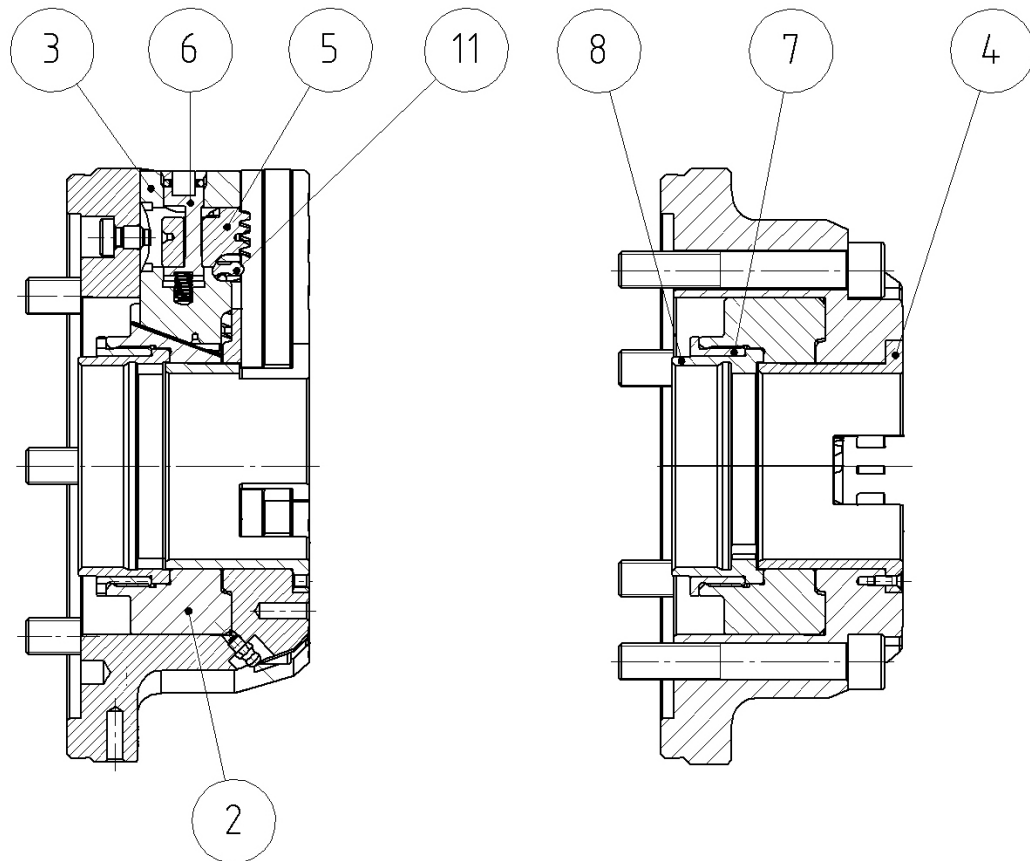
### THRUST BOLTS FOR INCREASING THE GRIPPING RANGE

D300224003



# FORKARDT® | 3FNC+S 315-104

## POWER CHUCK WITH QUICK CHANGE JAW SYSTEM



NUMBER	LABEL	ITEM NUMBER
2	PISTON	DI963I5002
3	TRANSMISSION JAW	DI963I5003
4	PROTECTIVE SLEEVE	DI963I5004
5	ENGAGING PLUNGER	DI963I5005
6	ECCENTRIC LOCKING PIN	DI963I5006
7	DRAW TUBE CONNECTOR COVER	DI963I5007
8	DRAW TUBE CONNECTOR	DI963I5008
11	NOTCH	DI96260011
3, 5, 6, 11*	TRANSMISSION JAW COMPLETE	DI963I5400

\* incl. Spring set