

FORKARDT[®]

FORKARDT.COM

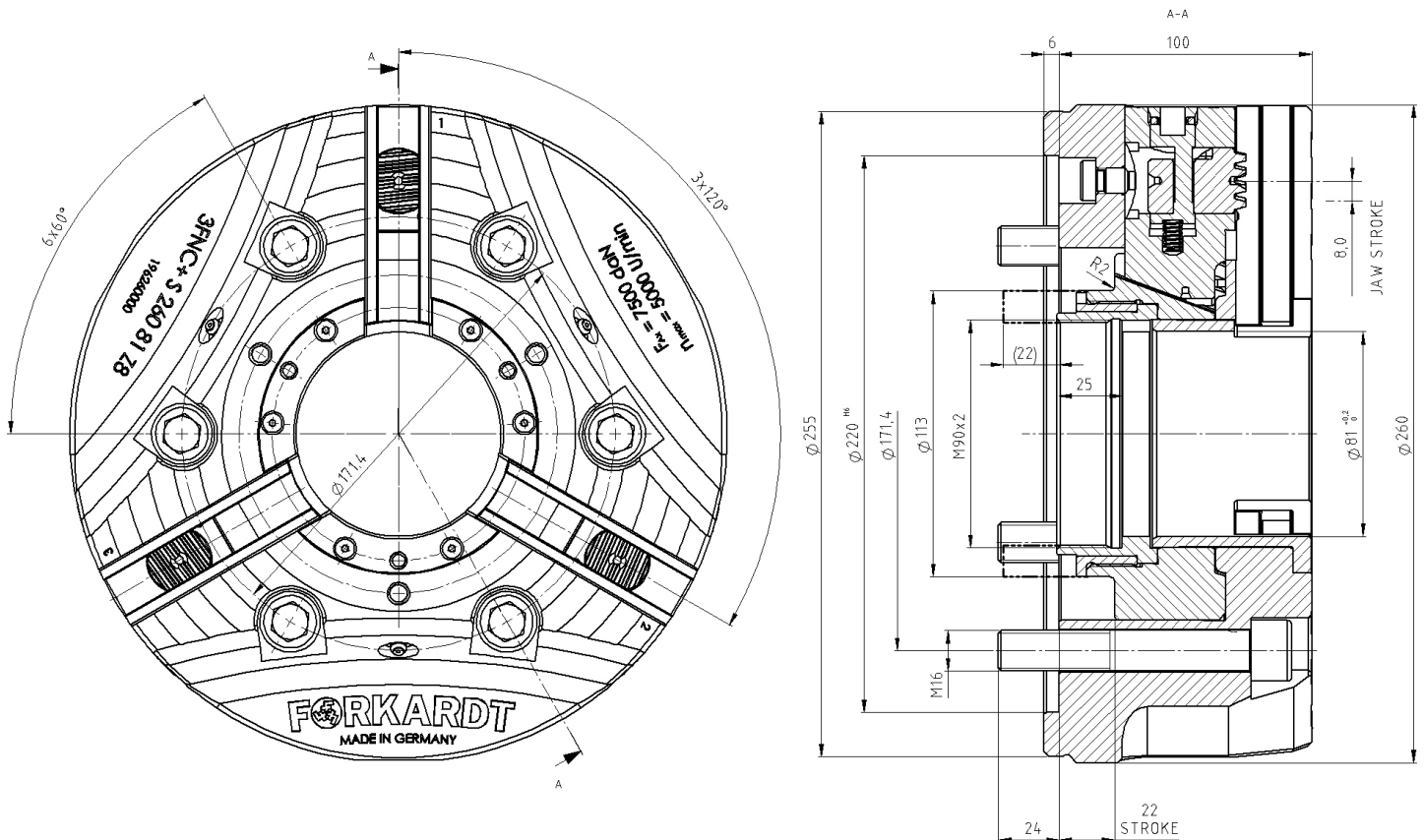


3FNC+S 260-81

POWER CHUCK WITH QUICK CHANGE JAW SYSTEM

FORKARDT® | 3FNC+S 260-81

POWER CHUCK WITH QUICK CHANGE JAW SYSTEM



PERFORMANCE DATA

Max. Speed	rpm.	5.000
Max. Clamping force	daN	13.500
Max. Actuating force	daN	7.500
Weight	Kg	25
Jaw stroke	mm	8
Serration	Angled serration	

FORKARDT® | **3FNC+S 260-81**

POWER CHUCK WITH QUICK CHANGE JAW SYSTEM

CYL . MOUNTING DIN 6350

SPINDLE SIZE DIN55026	WITHOUT BASE AND TOP TOOLING	INCL. ONE PIECE STEP JAW (FSTB)	INCL. BASE & HARD TOP JAW (FGB + FHB)
Z 220	D196260000	D196260979	D196260978

MOUNTING SCREW	6 X M16
-----------------------	----------------

SHORT TAPER DIN 55026

To build on a spindle according to DIN 55026 you need an additional flange with the required cone size.



SPINDLE SIZE DIN55026	ITEM NUMBER
K6	D196260K06
K8	D196260K08

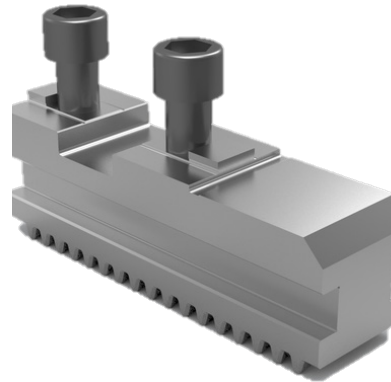
FORKARDT® | **3FNC+S 260-81**

POWER CHUCK WITH QUICK CHANGE JAW SYSTEM



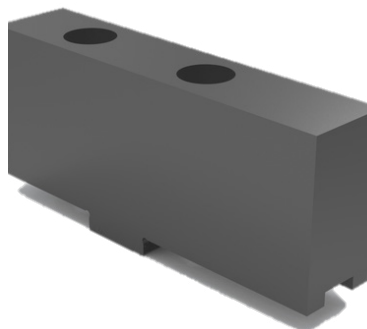
WRENCH FOR JAW CHANGE

D196260010



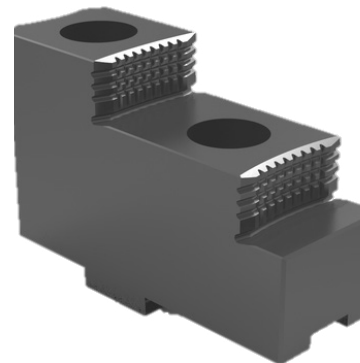
BASE JAW FGB250

D180588000



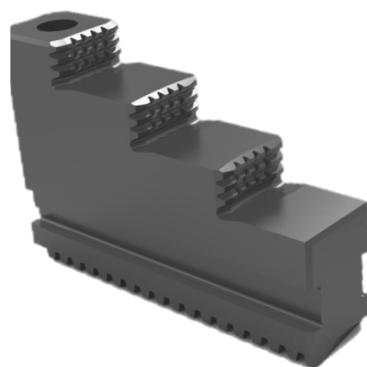
SOFT TOP JAW FWB250

D1070026425



HARD TOP JAW FHB250

D1070026524



ONE PIECE STEPED JAW FSTB250

D1070026533

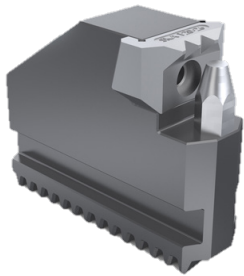


SOFT MONOBLOK JAW FMB250

D1070026034

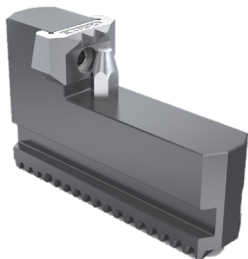
FORKARDT® | 3FNC+S 260-81

POWER CHUCK WITH QUICK CHANGE JAW SYSTEM



GRIPPER JAW OD-CLAMPING KBKTNC

Clamping Range	Item Number
Ø 63-159	D45474000
Ø 94-172	D45475000
Ø 134-218	D45476000
Ø 180-319	D45480000



GRIPPER JAW ID-CLAMPING KBKTNC

Clamping Range	Item Number
Ø 126-222	D45478000
Ø 198-294	D45479000



GREASE (CARTRIDGE 400 GR) PF26

D410140026

GREASE (CAN 1 KG) PF26

D410140126



HYDRAULIC GREASE GUN

D410140012I

GRIPPING FORCE METER (Ø 63-293) SKM1200

D300224000

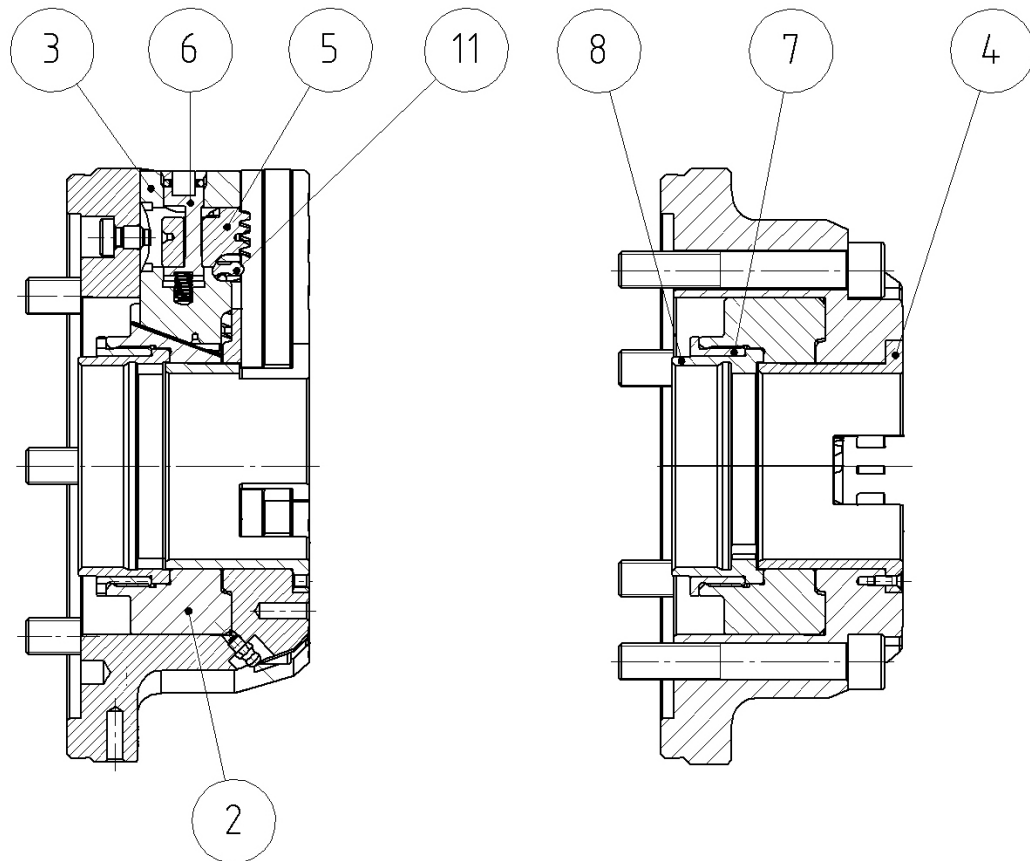
THRUST BOLTS FOR INCREASING THE GRIPPING RANGE

D300224003



FORKARDT® | 3FNC+S 260-81

POWER CHUCK WITH QUICK CHANGE JAW SYSTEM



NUMBER	LABEL	ITEM NUMBER
2	PISTON	DI96260002
3	TRANSMISSION JAW	DI96260003
4	PROTECTIVE SLEEVE	DI96260004
5	ENGAGING PLUNGER	DI96260005
6	ECCENTRIC LOCKING PIN	DI96260006
7	DRAW TUBE CONNECTOR COVER	DI96260007
8	DRAW TUBE CONNECTOR	DI96260008
11	NOTCH	DI96260011
3, 5, 6, 11 *	TRANSMISSION JAW COMPLETE	DI96260400

* incl. Spring set