

# **FORKARDT**<sup>®</sup>

FORKARDT.COM

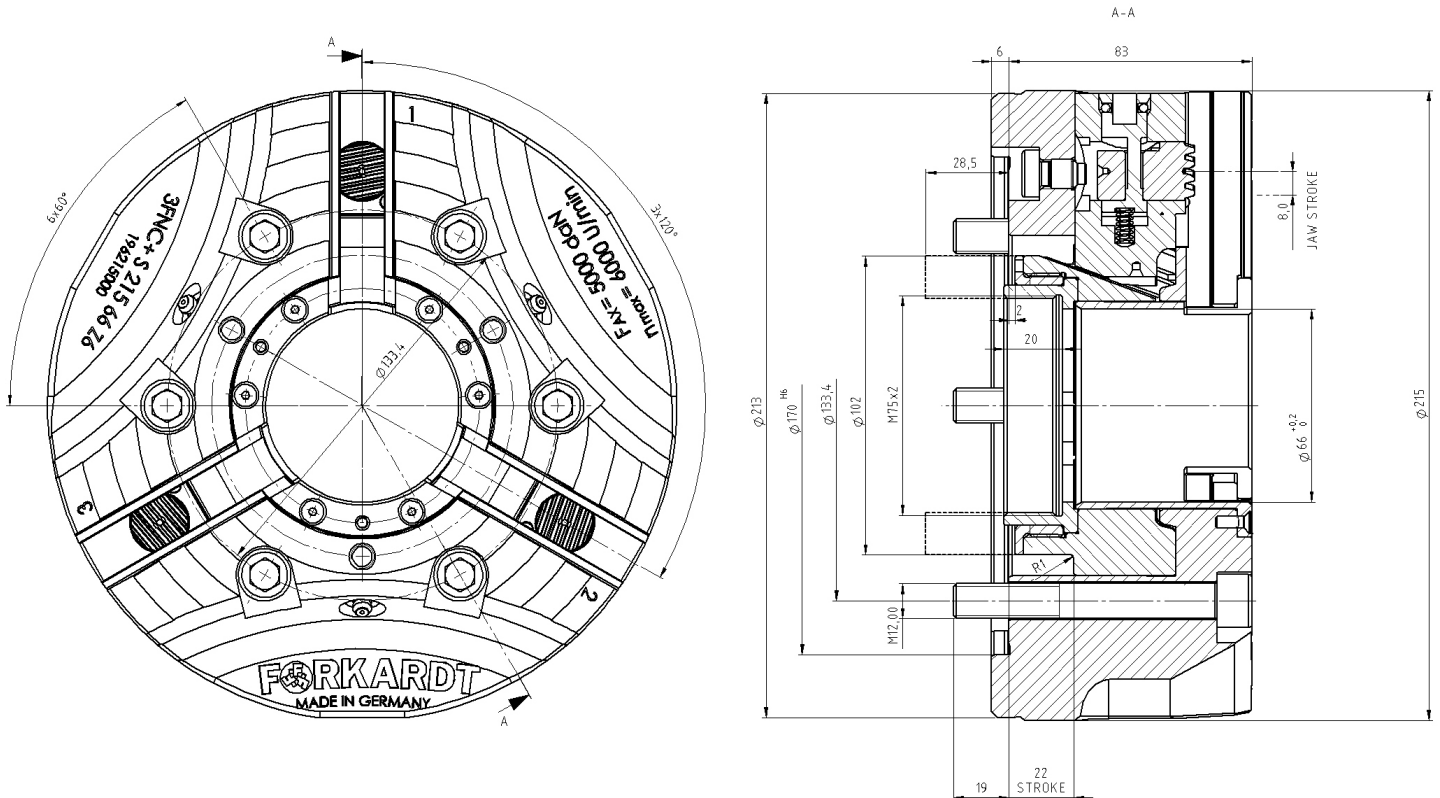


# **3FNC+S 215-66**

**POWER CHUCK WITH QUICK CHANGE JAW SYSTEM**

# FORKARDT® | 3FNC+S 215-66

## POWER CHUCK WITH QUICK CHANGE JAW SYSTEM



### PERFORMANCE DATA

Max. Speed	rpm.	6.000
Max. Clamping force	daN	9.000
Max. Actuating force	daN	5.000
Weight	Kg	15.4
Jaw stroke	mm	8
Serration	Angled serration	

# **FORKARDT®** | **3FNC+S 215-66**

## **POWER CHUCK WITH QUICK CHANGE JAW SYSTEM**

### **CYL . MOUNTING DIN 6350**

SPINDLE SIZE DIN55026	WITHOUT BASE AND TOP TOOLING	INCL. ONE PIECE STEP JAW (FSTB)	INCL. BASE & HARD TOP JAW (FGB + FHB)
Z 170	DI962I5000	DI962I5979	DI962I5978

<b>MOUNTING SCREW</b>	<b>6 X M12</b>
-----------------------	----------------

### **SHORT TAPER DIN 55026**

To build on a spindle according to DIN 55026 you need an additional flange with the required cone size.



SPINDLE SIZE DIN55026	ITEM NUMBER
K6	DI96I85K06
K8	DI96I85K08

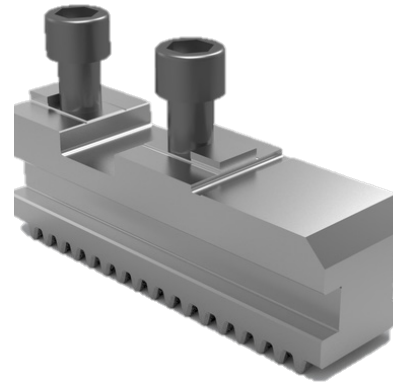
# **FORKARDT**® | **3FNC+S 215-66**

## **POWER CHUCK WITH QUICK CHANGE JAW SYSTEM**



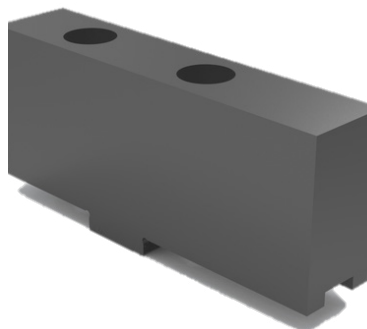
**WRENCH FOR JAW CHANGE**

D196215010



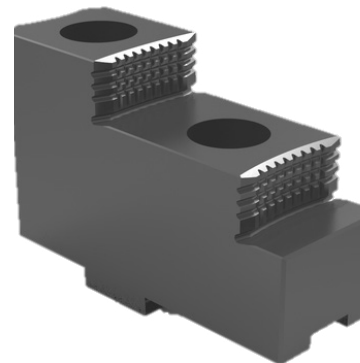
**BASE JAW** FGB200

D180577000



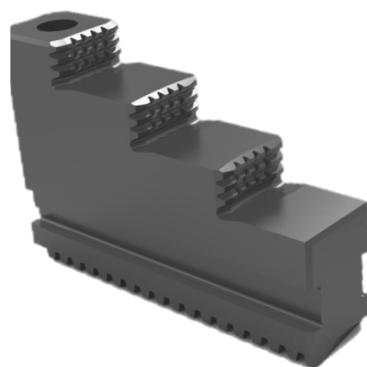
**SOFT TOP JAW** FWB200

D1070021525



**HARD TOP JAW** FHB200

D1070021624



**ONE PIECE STEPED JAW** FSTB200

D1070021633

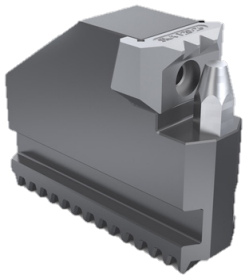


**SOFT MONOBLOK JAW** FMB200

D1070021734

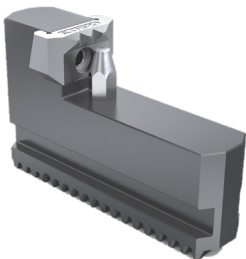
# FORKARDT® | 3FNC+S 215-66

## POWER CHUCK WITH QUICK CHANGE JAW SYSTEM



### GRIPPER JAW OD-CLAMPING KBKTNC

Clamping Range	Item Number
Ø 41-122	D161833000
Ø 64-104	D45469000
Ø 108-188	D45470000
Ø 130-211	D45471000



### GRIPPER JAW ID-CLAMPING KBKTNC

Clamping Range	Item Number
Ø 106-186	D45472000
Ø 161-242	D45473000



### GREASE (CARTRIDGE 400 GR) PF26

D410140026

### GREASE (CAN 1 KG) PF26

D410140126



### HYDRAULIC GREASE GUN

D4101400121

### GRIPPING FORCE METER (Ø 63-293) SKM1200

D300224000

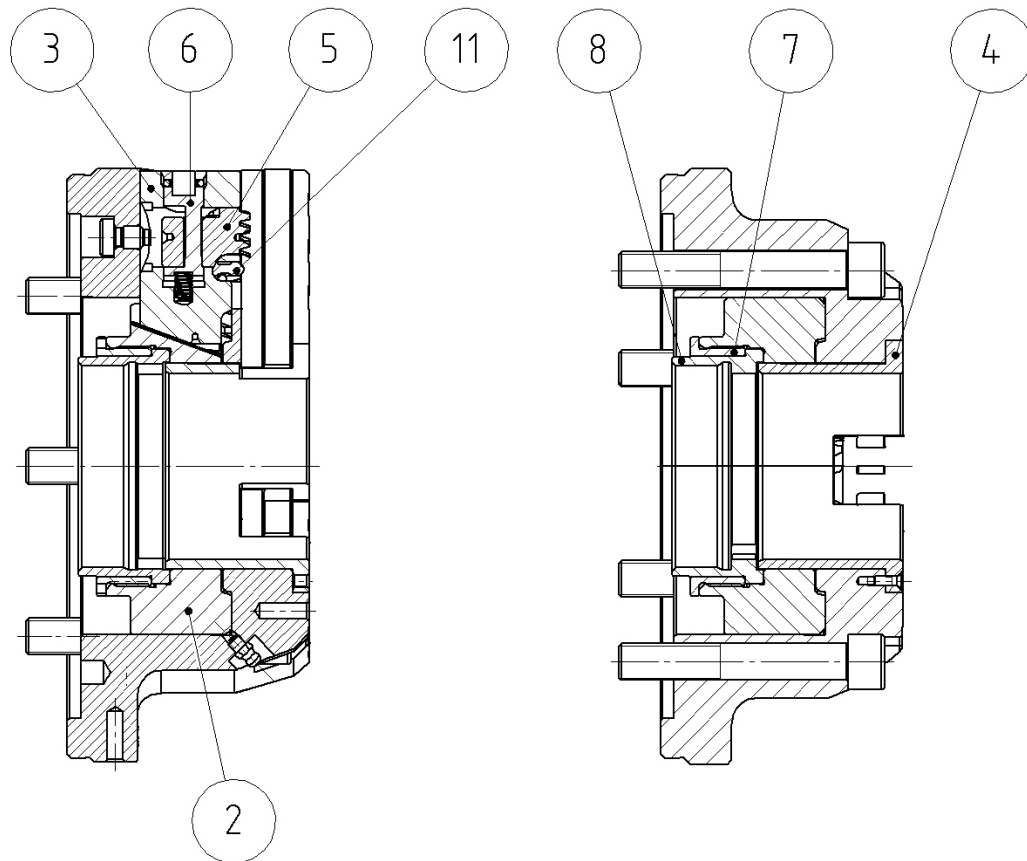
### THRUST BOLTS FOR INCREASING THE GRIPPING RANGE

D300224003



# FORKARDT® | 3FNC+S 215-66

## POWER CHUCK WITH QUICK CHANGE JAW SYSTEM



NUMBER	LABEL	ITEM NUMBER
2	PISTON	DI962I5002
3	TRANSMISSION JAW	DI962I5003
4	PROTECTIVE SLEEVE	DI962I5004
5	ENGAGING PLUNGER	DI962I5005
6	ECCENTRIC LOCKING PIN	DI962I5006
7	DRAW TUBE CONNECTOR COVER	DI962I5007
8	DRAW TUBE CONNECTOR	DI962I5008
11	NOTCH	DI962I5011
3, 5, 6, 11 *	TRANSMISSION JAW COMPLETE	DI962I5400

\* incl. Spring set