

FORKARDT[®]

FORKARDT.COM

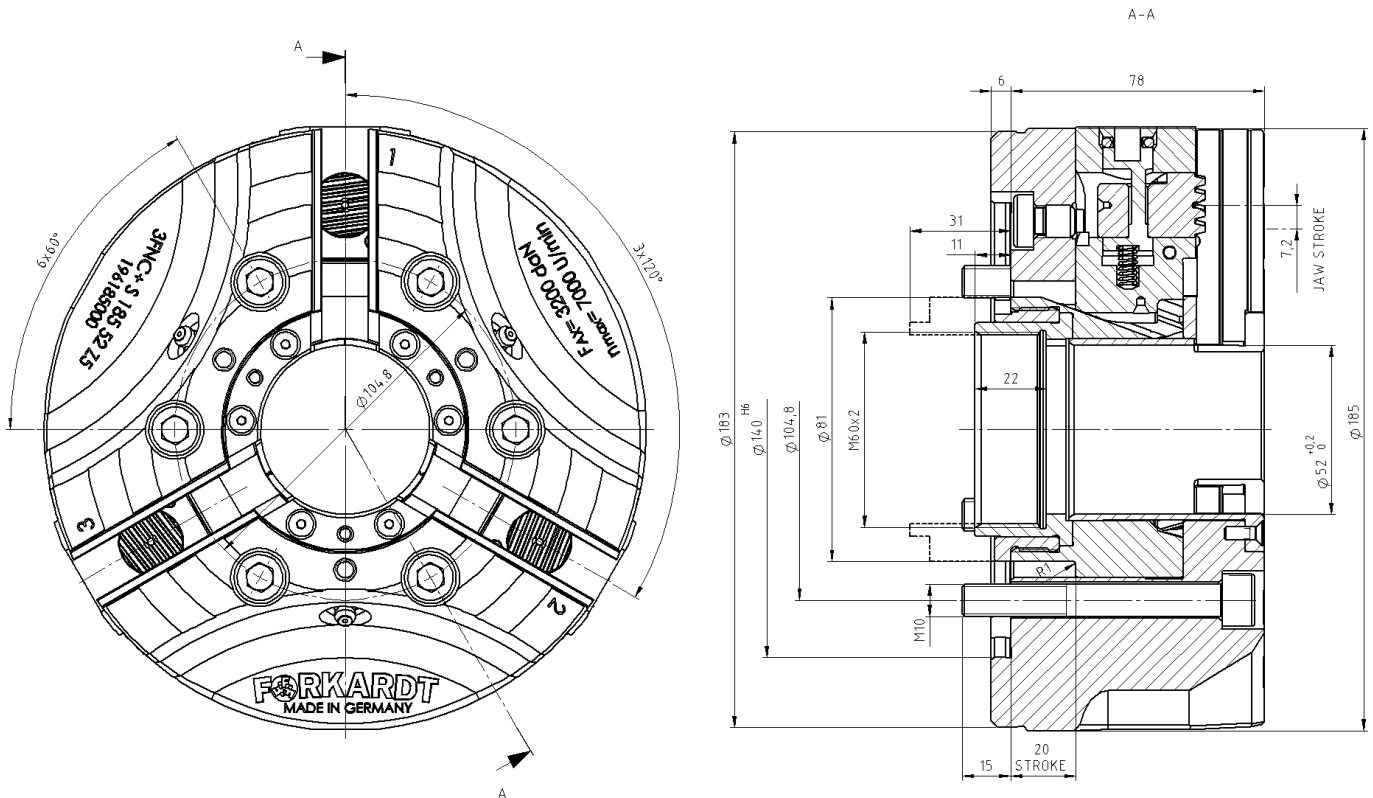


3FNC+S 185-52

POWER CHUCK WITH QUICK CHANGE JAW SYSTEM

FORKARDT® | 3FNC+S 185-52

POWER CHUCK WITH QUICK CHANGE JAW SYSTEM



PERFORMANCE DATA		
Max. Speed	rpm.	7.000
Max. Clamping force	daN	6.000
Max. Actuating force	daN	3.200
Weight	Kg	11
Jaw stroke	mm	7,2
Serration	Angled Serration	

FORKARDT® | **3FNC+S 185-52**

POWER CHUCK WITH QUICK CHANGE JAW SYSTEM

CYL . MOUNTING DIN 6350

SPINDLE SIZE DIN55026	WITHOUT BASE AND TOP TOOLING	INCL. ONE PIECE STEP JAW (FSTB)	INCL. BASE & HARD TOP JAW (FGB + FHB)
Z 140	DI96185000	DI96185979	DI96185978

MOUNTING SCREW	6 X M10
-----------------------	----------------

SHORT TAPER DIN 55026

To build on a spindle according to DIN 55026 you need an additional flange with the required cone size.



SPINDLE SIZE DIN55026	ITEM NUMBER
K5	DI96185K05
K6	DI96185K06

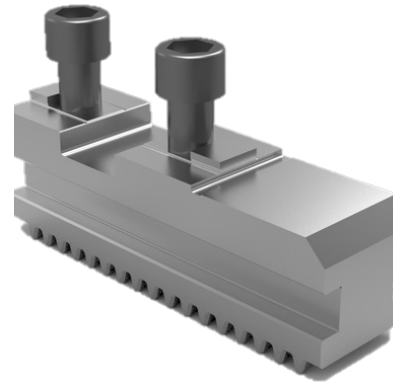
FORKARDT® | 3FNC+S 185-52

POWER CHUCK WITH QUICK CHANGE JAW SYSTEM



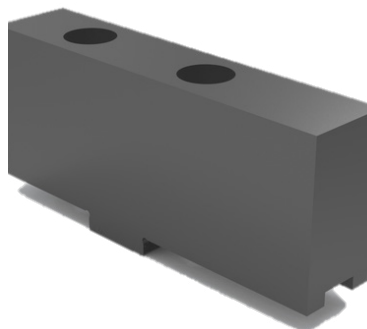
WRENCH FOR JAW CHANGE

D196215010



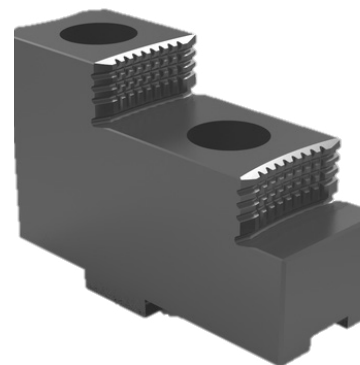
BASE JAW GGBI60

D180567400



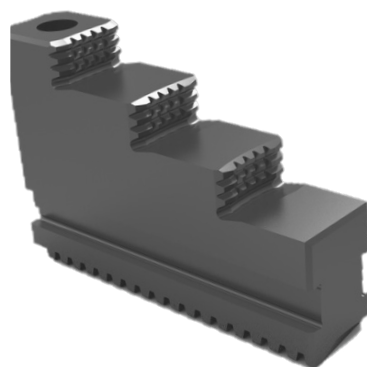
SOFT TOP JAW FWBI60

D1070016525



HARD TOP JAW FHB160

D1070016624



ONE PIECE STEPED JAW FSTBI60

D1070016633

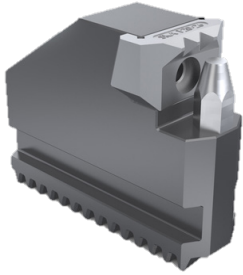


SOFT MONOBLOK JAW FMBI60

D1070016734

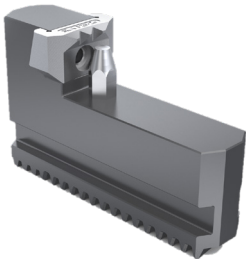
FORKARDT® | 3FNC+S 185-52

POWER CHUCK WITH QUICK CHANGE JAW SYSTEM



GRIPPER JAW OD-CLAMPING KBKTNC

Clamping Range	Item Number
Ø 29-93	D1161832000
Ø 82-160	D45464000
Ø 105-174	D45465000



GRIPPER JAW ID-CLAMPING KBKTNC

Clamping Range	Item Number
Ø 87-138	D45466000
Ø 133-212	D45467000



GREASE (CARTRIDGE 400 GR) PF26

D410140026

GREASE (CAN 1 KG) PF26

D410140126



HYDRAULIC GREASE GUN

D4101400121

GRIPPING FORCE METER (Ø 63-293) SKM1200

D300224000

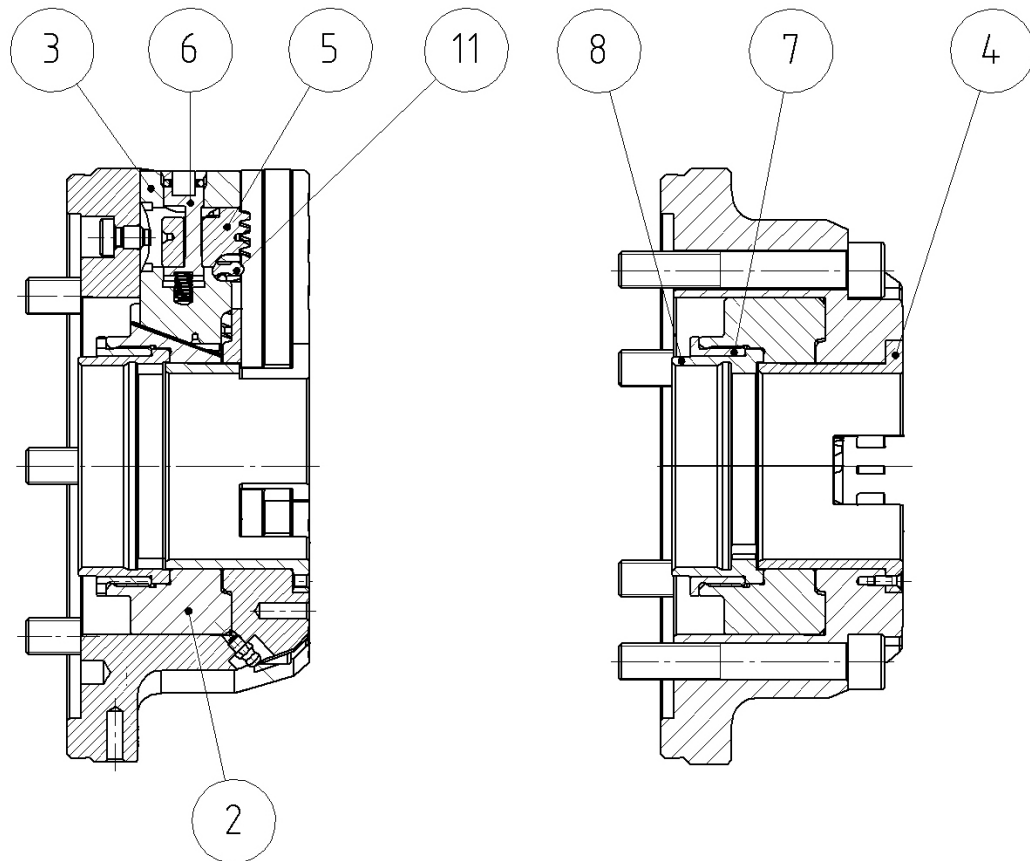


THRUST BOLTS FOR INCREASING THE GRIPPING RANGE

D300224003

FORKARDT® | 3FNC+S 185-52

POWER CHUCK WITH QUICK CHANGE JAW SYSTEM



NUMBER	LABEL	ITEM NUMBER
2	PISTON	DI96185002
3	TRANSMISSION JAW	DI96185003
4	PROTECTIVE SLEEVE	DI96185004
5	ENGAGING PLUNGER	DI96185005
6	ECCENTRIC LOCKING PIN	DI96185006
7	DRAW TUBE CONNECTOR COVER	DI96185007
8	DRAW TUBE CONNECTOR	DI96185008
11	NOTCH	DI96185011
3, 5, 6, 11*	TRANSMISSION JAW COMPLETE	DI96185400

* incl. Spring set